

# Juneau Child Care

## BY THE NUMBERS 2017

### There is not enough child care to meet the needs of the community

There are **2,400** kids in Juneau under the age of six. Almost **70 percent** are without a stay-at-home parent and need child care. There are only enough licensed child care slots for one out of every three, leaving **34 percent** of our birth to five year olds in unknown child care situations.



There is currently only one licensed child care space for every 10 infants and toddlers. Over **550** households report restricted employment due to lack of affordable quality child care in Juneau.

(100 spaces for 1,000 children under age 2.5.)

### Child Care Workers Wages are Low

While the 2016 average wage for a child care worker in Juneau is **\$28,184**, an increase of nearly **6 percent** from the year before, wages remain low. Kindergarten teachers are paid 2.3 times more than child care workers, and child care workers have no summer or winter vacations, and likely no health insurance or retirement benefits.

**\$28,184**

Average Juneau Child Care Wage

**\$51,720**

Average Juneau Wage

**\$64,040**

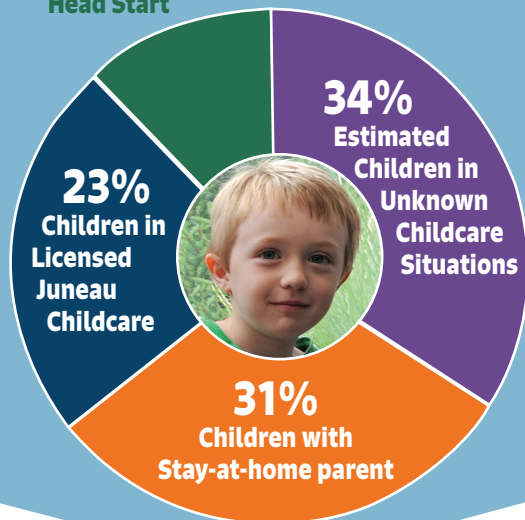
Average Juneau Kindergarten Teacher Salary

With an annual income of **\$44,120** needed to afford a one-bedroom unit in Juneau, child care workers don't earn enough to pay the rent. (Source: National Low Income Housing Coalition). Low wages make attracting and retaining qualified educational professionals for child care positions difficult.

### More Licensed Child Care is Needed

An overview of the status of child care in Juneau, Alaska June 2017

**11%**  
Juneau School District,  
faith-based preschools,  
Head Start



### Child Care Costs more than College

A year of child care costs more in Juneau than in-state undergraduate tuition at the University of Alaska Southeast.

**\$10,370**

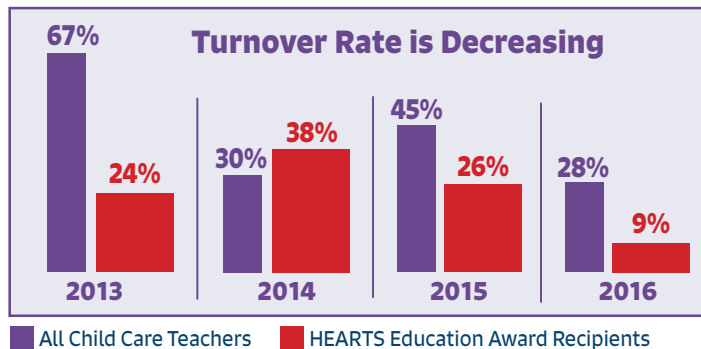
Average 1-year Cost of Child Care in Juneau

**\$8,228**

Average 1-year Cost of attending UAS

## The HEARTS Initiative is Working

One of the dramatic impacts of the HEARTS Initiative is the decrease in turnover rates among HEARTS education award recipients.



## Juneau Child Care BY THE NUMBERS 2017

<b>2,400</b>	Juneau Population Under Age Six 2016 <sup>1</sup>
<b>560</b>	Total Licensed Child Care Slots in Juneau 2017 <sup>3</sup>
<b>108</b>	Number of Infant/Toddler Spaces 2017 <sup>3</sup>
<b>740</b>	Estimated Juneau Children Under Age Six with a Stay-At-Home Parent 2016 <sup>1,2</sup>
<b>1660</b>	Estimated Juneau Children Under Age Six with All Parents Working 2016 <sup>1,2</sup>
<b>820</b>	Estimated Juneau Children Under Age Six in Unknown Child Care Situations 2016 <sup>3,4</sup>
<b>1 to 4</b>	Ratio of Licensed Child Care Slots to Children Under Six
<b>\$28,184</b>	Average Annual Child Care Wage in Juneau 2016 <sup>1</sup>
<b>\$51,720</b>	Average Annual Wage in Juneau 2016 <sup>1</sup>
<b>\$64,040</b>	Average Annual Kindergarten School Teacher Wage in Juneau 2016 <sup>1</sup>
<b>102</b>	Total Child Care Workers in Juneau (in Licensed Facilities) 2016 <sup>3</sup>
<b>28%</b>	Annual Turnover Rate for Juneau Child Care Workers 2017 <sup>3</sup>
<b>29</b>	Child Care Workers with Child Development Assoc. or 12+ Credits 2017 <sup>3</sup>
<b>9%</b>	Annual Turnover Rate for Juneau Child Care Workers that receive a HEARTS Award 2017 <sup>3</sup>
<b>1 to 4</b>	Ratio of Qualified Staff to All Child Care Workers 2016 <sup>3</sup>
<b>\$10,370</b>	Average Annual Child Care Cost Per Child 2015 <sup>5</sup>

Sources: 1 Alaska Department of Labor; 2 American Community Survey 5-YEAR Estimates Table B23008 2011-2015; 3 AEYC; 4 JEDC analysis; 5 2015 Alaska Child Care Market Price Survey Report

**sea aeyc**

Southeast Alaska Association for the Education of Young Children

**thread**



**Association for the Education of Young Children, Southeast Alaska**  
3100 Channel Drive, Suite 315, Juneau, AK (907) 789-1235 [www.aeyc-sea.org](http://www.aeyc-sea.org)