

Spike Prime Word Blocks Motor and Sensor Guide

Created by: Craig Fox, FIRST in Alaska



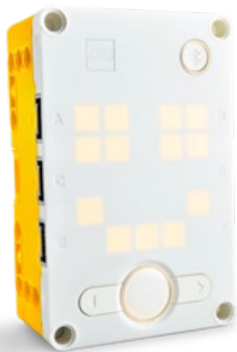
Color Sensor



Force Sensor



Distance Sensor



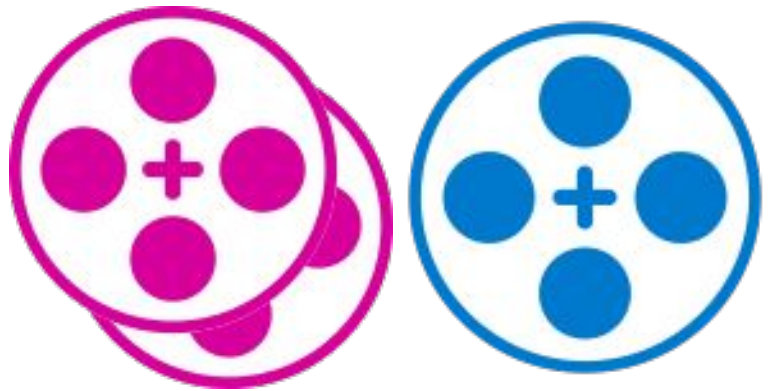
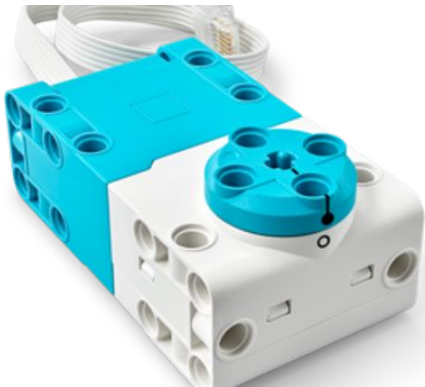
Hub



Medium Motor



Large Motor



Color Sensor



Sensors

Code blocks for Color Sensor:

- is color [red] ?
- color
- reflection < 50 % ?
- reflected light

Events

Event block: when color is [red]

Force Sensor



Sensors

Code blocks for Force Sensor:

- is pressed ?
- pressure in %

Events

Event block: when pressed

Distance Sensor



Light

Code block: light up [off]

Sensors

Code blocks for Distance Sensor:

- is closer than 15 %
- distance in %

Events

Event block: when closer than 8

Either motor can be used with either “motor” or “movement” blocks. Movement is for the driving of the robot, motor is for individual motors

Medium Motor



Large Motor



Motors



Movement



Hub



Light

- turn on for 2 s
- turn on
- write Hello
- turn off pixels
- set pixel brightness to 75 %
- set pixel at 1, 1
- rotate
- set orientation to upright
- set Center Button light to

Sound

- play sound Cat Meow 1 until done
- start sound Cat Meow 1
- play beep 60 for 0.2 seconds
- start playing beep 60
- stop all sounds
- change pitch effect by 10
- set pitch effect to 100
- clear sound effects
- change volume by -10
- set volume to 100 %
- volume

Sensors

- is tilted ?
- is front up?
- is shaken ?
- pitch angle
- set yaw angle to 0
- loudness
- is left button pressed ?

Events

- when tilted
- when front is up
- when shaken
- when left Button pressed